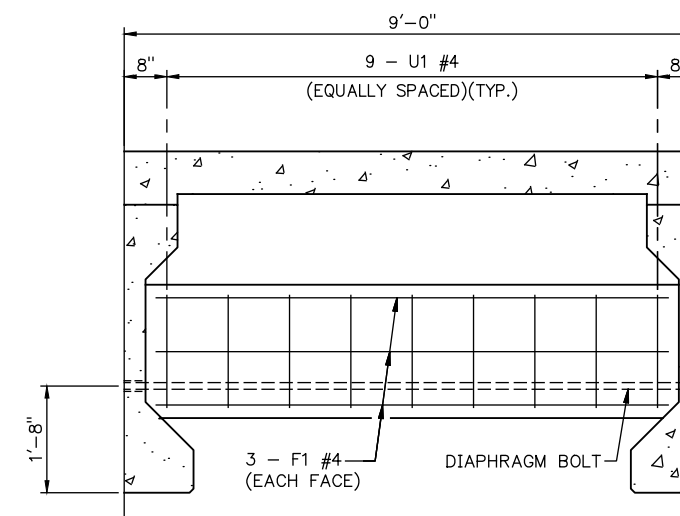


END DIAPHRAGM DETAIL

- NOTES: VENT HOLES (PVC SLEEVES) SHALL BE PLACED THRU EACH CONCRETE END DIAPHRAGM, ONE (1) PER BAY, OVER EVERY PIER.
- THE 3" Ø PVC PIPE SLEEVES SHALL BE PLACED TO PROVIDE A MINIMUM OF 2" CLR. TO THE REINFORCING STEEL.
- ALL COSTS FOR INSTALLING THE 3" Ø PVC PIPE SLEEVES, INCLUDING MATERIALS, LABOR, EQUIPMENT AND INCIDENTALS SHALL BE INCLUDED IN THE PRICE BID FOR "CLASS AA CONCRETE".
- FOR ADDITIONAL INTERMEDIATE AND END DIAPHRAGM SECTION & REINFORCING DETAILS, SEE SHEET NO. 52.
- FOR SLAB REINFORCING PLANS, SEE SHEET NOS. 56 AND 57.
- FOR BAR BEND DETAILS, SEE SHEET NO. 52.
- FOR BRIDGE SLAB NOTES, SEE SHEET NOS. 56 AND 57.



INTERMEDIATE DIAPHRAGM DETAIL

**DIAPHRAGM DETAILS**  
(SHEET 2 OF 2)  
BRIDGE "A" C.R.L. STA. 586+80.46

State Job No. 28768(04) Sheet No. 53

HARMON COUNTY S.H. 30 BRIDGE & APPROACHES